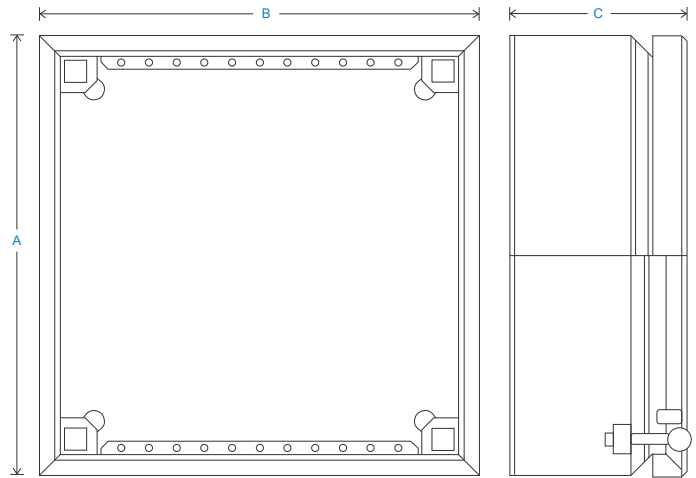
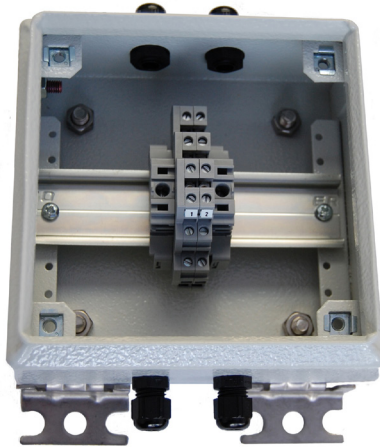


# HS-JE Junction Enclosure

Mild Steel

## Key Features

- Accelerometer cable glanding
- Ease of installation
- Flexible combinations



## Technical Performance

|                             |  |  |  |
|-----------------------------|--|--|--|
| Inputs                      | Accelerometer cabling  | Glanding                                       | Glands supplied but not fitted                             |
| Output                      | Multi-core glanding  |  | Holes are punched for:                                     |
| Material                    | Mild Steel painted RAL 7042 as standard (alternatives can be specified in options of 'How To Order' table) | Single input M12 - $\varnothing$ 3.5-7mm cable | Single input M20 - $\varnothing$ 7-13mm multi-core cable   |
| Dimensions                  | see: 'How To Order' table  | Multi input M20 - 3 x $\varnothing$ 5.3mm      |  |
| Sealing                     | IP66   | Labelling                                      | Channel locations - other labelling available upon request |
| Termination                 | Klippon Type   | Mounting                                       | supplied are 4 x Brackets                                  |
| Operating Temperature Range | -20 to 130°C   | EMC  | EN61326-1:2013   |

## How To Order

